

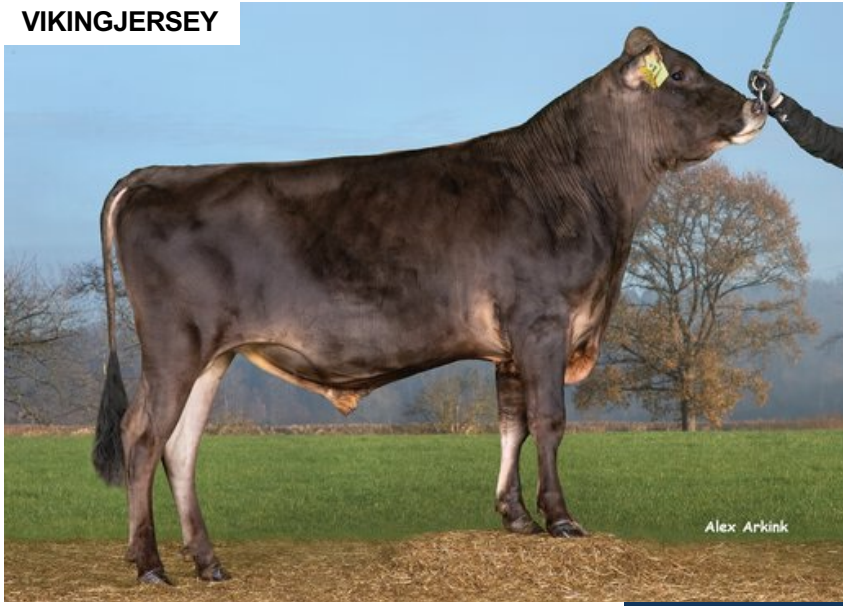
VJ Henk

DNK 304918

Beta casein: A2A2 Kappa casein: BB aAa: 462
 DOB.: 23/08/2019 VJ Higher x VJ Link x DJ Hulk
 Proven Polled: POF



VIKINGJERSEY



Alex Arkink

NTM 14

RECOMMENDED FOR

- HEALTH • MILK • CALVING EASE
- HOOF HEALTH

Dam average (305 days) 8299 kg 6.56 % F / 544 kgF 4.56 % P / 379 kgP
 Est. dtr. average (305 days) 7969 kg 5.88 % F / 467 kgF 4.26 % P / 339 kgP

NTM October 2024

PRODUCTION & EFFICIENCY NO. OF DTRS 485 REL 96%

		90	100	110	120
Production	111				
Milk kg	111				
Protein kg	111				
Protein %	94				
Fat, kg	111				
Fat, %	96				
Growth	100				
Saved feed	93				
Persistency	94				

FUNCTIONAL NO. OF DTRS 396 REL 86%

		90	100	110	120
Daughter fertility	97				
Calving sire	111				
Calving maternal	103				
Udder health	102				
General health	113				
Longevity	99				
Hoof health	107				
Youngstock survival	97				
Milkability	105				
Temperament	105				

OVERALL CONFORMATION NO. OF DTRS 156 REL 85%

		90	100	110	120
Frame	108				
Feet & legs	115				
Udder	111				

CONFORMATION

		80	90	100	110	120		
Stature	Short						Tall	114
Rib structure	Coarse						Angular	103
Chest width	Narrow						Wide	107
Body depth	Shallow						Deep	99
Rump width	Narrow pins						Wide pins	108
Rump angle	High pins						Low pins	106
Top line	Weak						Strong	94
Rear legs, side view	Straight						Sickled	75
Rear legs, rear view	Toes out						Parallel	103
Foot angle	Low						Steep	122
Bone quality	Coarse						Fine and thin	103
Hock quality	Filled						Dry	82
Fore udder attachme...	Loose						Strong	106
Rear udder height	Low						High	98
Rear udder width	Narrow						Wide	99
Udder support	Weak						Strong	98
Udder depth	Deep						High	111
Udder balance	Deep rear						Deep front	115
Teat length	Short						Long	117
Teat thickness	Thin						Thick	119
Teat placement (front)	Wide						Close	98
Teat placement (back)	Wide						Close	101