

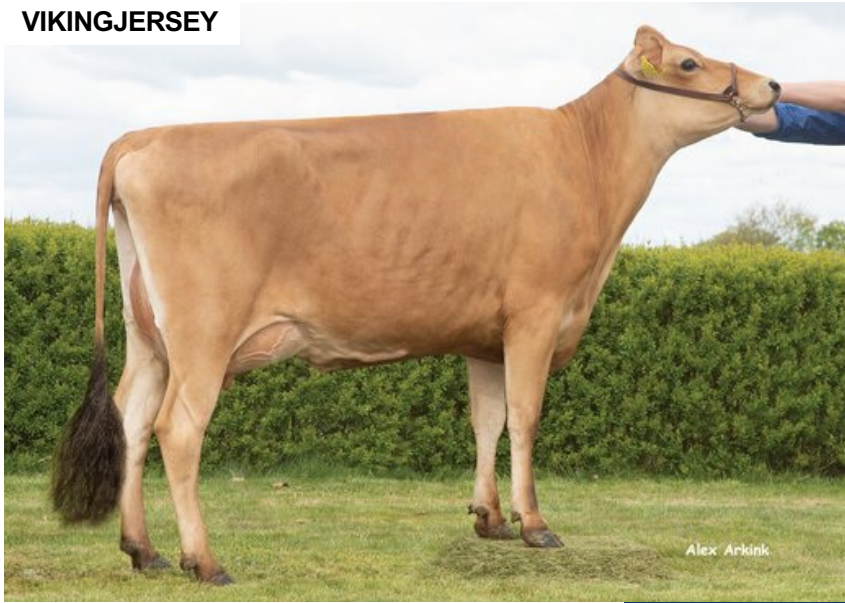
VJ Nibiru

DNK 304882

Beta casein: A2A2 Kappa casein: BB aAa: 435261
 DOB.: 11/04/2019 VJ Nibali x VJ Gislev x VJ Pick
 Proven Polled: POF



VIKINGJERSEY



NTM 14

RECOMMENDED FOR

- HEALTH
- FERTILITY
- CALVING EASE
- ORGANIC

Dam of VJ Nibiru

Dam average (305 days) 6977 kg 5.5 % F / 384 kgF 4.6 % P / 321 kgP
Est. dtr. average (305 days) 7711 kg 5.96 % F / 457 kgF 4.37 % P / 336 kgP

NTM October 2024

PRODUCTION & EFFICIENCY NO. OF DTRS 2516 REL 99%

		90	100	110	120
Production	106				
Milk kg	102				
Protein kg	108				
Protein %	106				
Fat, kg	102				
Fat, %	99				
Growth	89				
Saved feed	95				
Persistency	96				

FUNCTIONAL NO. OF DTRS 2164 REL 97%

		90	100	110	120
Daughter fertility	109				
Calving sire	106				
Calving maternal	101				
Udder health	109				
General health	107				
Longevity	105				
Hoof health	104				
Youngstock survival	111				
Milkability	92				
Temperament	102				

OVERALL CONFORMATION NO. OF DTRS 1214 REL 94%

		90	100	110	120
Frame	102				
Feet & legs	91				
Udder	113				

CONFORMATION

		80	90	100	110	120
Stature	Short					Tall 107
Rib structure	Coarse					Angular 102
Chest width	Narrow					Wide 96
Body depth	Shallow					Deep 100
Rump width	Narrow pins					Wide pins 101
Rump angle	High pins					Low pins 99
Top line	Weak					Strong 92
Rear legs, side view	Straight					Sickled 118
Rear legs, rear view	Toes out					Parallel 102
Foot angle	Low					Steep 86
Bone quality	Coarse					Fine and thin 98
Hock quality	Filled					Dry 112
Fore udder attachme...	Loose					Strong 105
Rear udder height	Low					High 109
Rear udder width	Narrow					Wide 100
Udder support	Weak					Strong 104
Udder depth	Deep					High 110
Udder balance	Deep rear					Deep front 100
Teat length	Short					Long 112
Teat thickness	Thin					Thick 104
Teat placement (front)	Wide					Close 92
Teat placement (back)	Wide					Close 90